

# Brush Chipper Model C7

MADE IN  
NEW ZEALAND

**The Hansa Model C7 is ideal for lifestyle blocks and large domestic gardens.**

This chipper is the ultimate machine when it comes to efficiency and speed of chipping and shredding your garden debris including branches, general garden pruning's, hedge material, vines and flower stalks. If you own a property with a lot of trees to take care of, then the Hansa C7 is the best option as there is no pre-cutting necessary - branches "flow" into the machine by themselves. The two cutting blades shear the material against the adjustable hardened anvil for amazing throughput.

The inertia generated by the large rotor disk creates enough momentum to keep cutting as well as giving the machine enough draught to discharge and deflect the mulch up to 4m away.



## FEATURES

- One in-feed chute with large opening at convenient operating height
- Quality engine – Honda 4 stroke petrol, GX200
- Self-feeding action, 70mm capacity
- Easy starting with manual clutch and twin belt drive
- 700mm high discharge into trailer, wheelbarrow or stockpile
- Solid housing construction of 5mm steel plate
- Easy to transport, well balanced on large pneumatic wheels
- Easy access to blades and clearing of housing – a few turns of the wingnut and everything is accessible within seconds
- Quality hyperloc powder-coated finish
- 12 month warranty, conditions apply

**The best chippers for any application.**

**Hansa**<sup>®</sup>  
CHIPPERS

# Brush Chipper Model C7

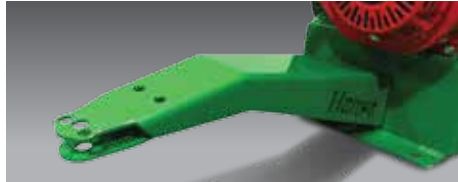
Model C7 will process all your unwanted branch material into wood chips of a fine and even 6 – 10mm texture, ideal for composting or mulching. The Hansa C7 is useful all year round as you do your winter pruning, spring clean up or trimming back in summer. Hansa Brush Chippers will offer you a much faster, more efficient and more user-friendly operation.

The Hansa Model C7 will become a vital piece of equipment you will love to use. The cantilever rotor design allows stringy materials such as flax and cabbage tree leaves to be processed, without running the risk of wrapping around a shaft.

Recycle your waste and return it to your garden as rich organic fertiliser!



**Easy to transport**  
well balanced on large pneumatic wheels, low centre of gravity.



**Optional Towbar** available with tongue or coupling.



**No precutting necessary**  
branches of this size flow into the machine by themselves.



**Easy access** to blades and clearing of housing, a few turns of the wingnut and everything is accessible within seconds.

## CONSTRUCTION

- Housing built of solid 5mm steel plate.
- Twin belt drive between engine and rotor for smooth running and protection of your engine against shock loads.
- Easy starting – start the engine disengaged from the rotor and then engage the belt drive.
- The cutting blades shear the material against an adjustable hardened counterknife, or anvil. This action will work just as efficiently in 10 years' time as on the first day, provided the blades are kept sharp.
- No plastic components, built to last – simply the strongest.

SPECIFICATIONS	Weight (kg)	Height (mm)	Width (mm)	Length (mm)	Approx. Capacity*
6.5HP (max) Honda engine	95	1200	650	900	70mm branches

\* depending on the type and hardness of the wood

When you compare different makes of machines, be careful, as some manufacturers rate their capacity by the size of the opening, which is misleading. Through a 75mm opening you can practically feed only a 50mm branch.

Please contact us for details if you are looking for a larger or smaller model. Visit our website for our full product range and videos of the machines in action.

## MANUFACTURED BY:

Hansa Products Ltd - 36 Tawn Place, PO Box 10323, Hamilton 3200, New Zealand  
**FREEPHONE 0508 4 HANSA (0508 442 672) PHONE 07 849 4749**  
**FAX 07 849 4746 EMAIL info@hansaproducts.co.nz**  
**www.hansaproducts.co.nz**

Hansa Products has a policy of continuous improvement, therefore specifications may change without notice. All products come with a 12 month warranty, conditions apply.

**The best chippers for any application.**

**Hansa**<sup>®</sup>  
**CHIPPERS**